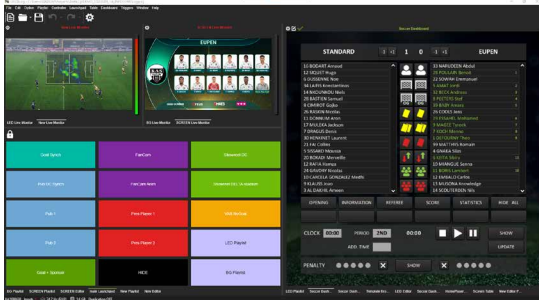


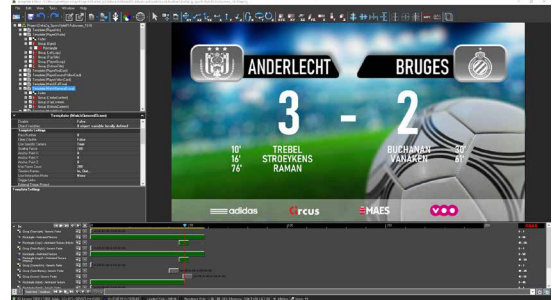
**DELTA-STADIUM IS THE MOST ACCURATE SOLUTION TO MANAGE THE ENTIRE STADIUM 4K/8K SCREENS AND LED RIBBONS, AND SHOW CONTROL AT YOUR FINGERTIPS. TAKE FAN ENGAGEMENT TO THE NEXT LEVEL BY EASILY AND QUICKLY TRIGGERING AUDIOVISUAL EFFECTS OF YOUR GAME-DAY HIGHLIGHTS. REGARDLESS OF SCREEN SHAPE, SIZE OR RESOLUTION, DELTA-STADIUM PROVIDES UNLIMITED CONTROL, GENERATING EXTRA SOURCE OF REVENUES FOR CLUBS AND NEW OPPORTUNITIES FOR SPONSORS.**

## TURNKEY SOLUTION

**DELTA-stadium** is a turnkey solution from the software to the hardware. The combination of its intuitive user interface and its state-of-the-art graphic engine (**DELTA-cg**) offer unparalleled flexibility and quality for live production. Associated with its real-time graphic **Template Editor**, you've the creative freedom to design advanced graphical projects and import them seamlessly in **DELTA-stadium** even while on air.



DELTA-CG Engine



Template Editor

01

### .PLAY CONTENT ACCURATELY

The ultimate solution for pixel-perfect content delivery to any LED screen. With our groundbreaking ScreenMatrix technology, experience seamless synchronization and stunning 2D/3D graphics in real-time. From giant screens to halo panels, **DELTA-stadium** has you covered. Elevate your sports experience with specially adapted visuals for football, rugby, basketball, and tennis.

02

### .MONETIZE ANY SCREEN

Monetize like never before with **DELTA-stadium**! Transform every screen into advertising space, effortlessly showcasing sponsor logos and captivating ads during main match events and beyond. Unlock new revenue streams effortlessly and maximize your sponsorship opportunities with ease.

03

### .ENGAGE ON SOCIAL WALL

Create a vibrant game culture and engage fans with a multi-channel experience. Seamlessly share content online and connect with fans in the stadium through our Social Wall integration. Take control of lighting, pyrotechnics, and audio effects using our Trigger Manager. Integrate statistical data and live camera feeds to deliver dynamic content.

## THEY TRUST US



Unilumin

# DELTA STADIUM

LIVE GRAPHICS SOLUTION  
FOR STADIUM AND ARENA DISPLAYS

INCLUDES

**DELTA  
CG**

**TEMPLATE  
EDITOR**

**DELTA  
CAST**



## WHY DELTA-STADIUM?

DELTA-stadium is an easy-to-operate solution with a user-friendly and intuitive interface . It synchronizes playlists and screens with high precision, elevating live events to a whole new level of fan engagement.

### Why should you limit yourself to a few layers and graphics per production?

DELTA-stadium and its DELTA-CG graphic engine does not limit you to the number of graphic elements you want to add to your production.

### Why not having the freedom to change your ideas at the last minute?

DELTA-stadium and its Template Editor allows real-time editing to always get the best versions of your graphics chart on air.

### Do you want to integrate an input stream into your DELTA-stadium?

DELTA-stadium integrates NDI, HDMI (optional) or SDI (optional) input support allowing the integration of external streams into your graphic compositions. And with its integrated ChromaKey, you have a ton of use case to choose from...

### Want to stay in control at your fingertips?

With its Stream Deck, and XKeys support, DELTA-stadium offers you the possibility to trigger one or more actions on multiple playlists. This guarantees you a secure and direct control of all actions repeated during your production. You can also use a tablet or phone as a remote control thanks to its easy-to-use launchpad and a WebAPI integration.

### Do you want to maximize the relevance of your graphical layers data?

DELTA-stadium integrates support for a wide variety of data files ensuring easy integration with your production team's data sources.

## VERSIONS

	PLAY	EDGE	PLAY+	ENGAGE	INFINITY
	Stand-alone machine (up to 3x 4K)				Distributed architecture (>3x4K, 8K)
	The ideal solution for the giant screen management	The solution for the perimeter LEDs management	The complete solution to synchronize all screens including perimeter LEDs	The perfect solution to engage with your audience	The limitless content management solution
<b>PLAY</b>					
Graphic engine and playout	Yes	Yes	Yes	Yes	Yes
Multi-sport interface	Yes	No	Yes	Yes	Yes
Template editor Express	Yes	Yes	Yes	Yes	Yes
Launchpad	Yes	Yes	Yes	Yes	Yes
#playlists	4	16	16	16	Yes
<b>MONETIZE</b>					
Perimeter LED management		Yes	Yes	Yes	Yes
Warping (for non-planar/ rectangular screens)			Yes	Yes	Yes
<b>ENGAGE</b>					
Kiss cam and other camera feeds (replays) – 2x NDI in				Yes	Yes
Pre- / Post-game show (control external lights, sound effects)				Yes	Yes
Social media curation & moderation				Yes	Yes

## DELTACAST

Rue Gilles Magnée 92/6 | B-4430 Ans | Belgium

T : +32 (0) 4 239 78 81 | F : +32 (0) 4 239 78 89

contact@deltacast.com | [www.deltacast.com](http://www.deltacast.com)

